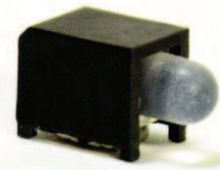


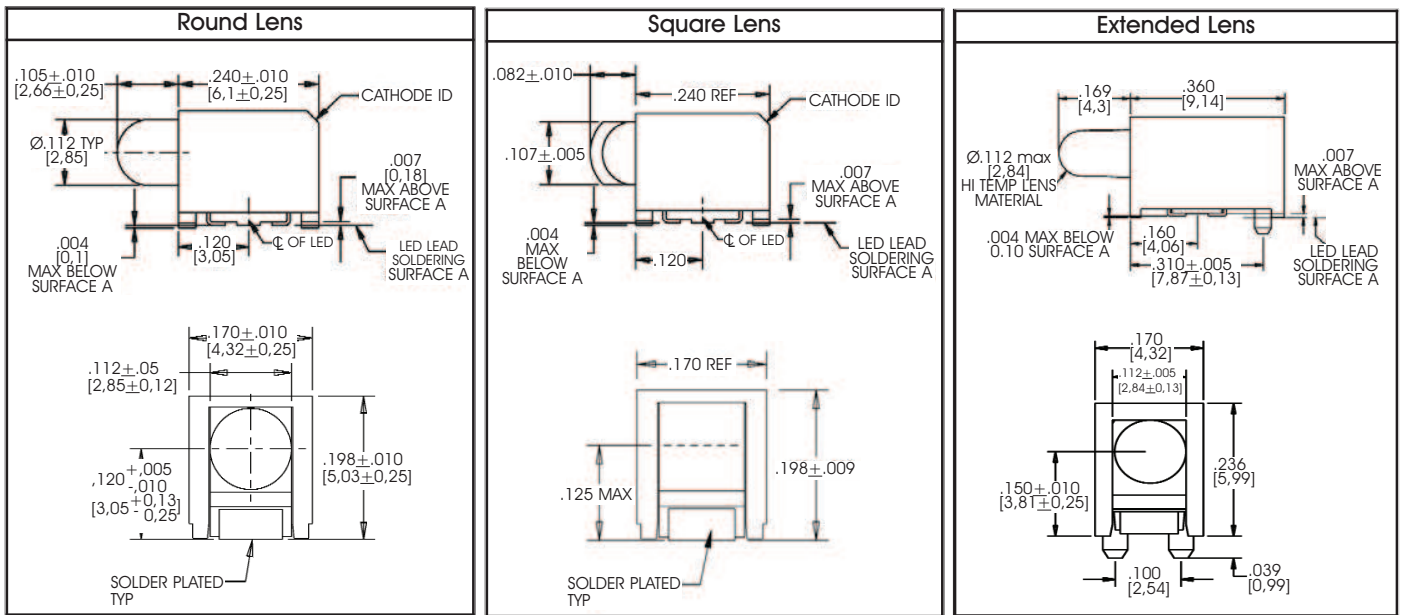


591 Series Prism® CBI®

Single Level Surface Mount LED

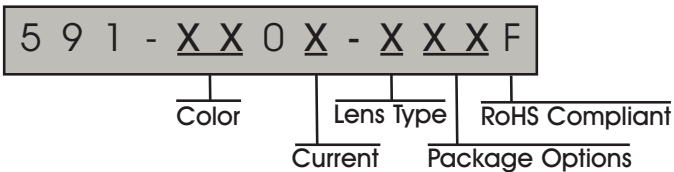


Specifications¹



¹For pad layout please see page 13

Order Code



Current	
Current Code	Current Type
1	Standard
4	Low Current ²

²Detail on page 14

Lens Type	
Lens Code	Lens Type
0	Round
1	Square
2	Extended

Packaging Type	
Packaging Code	Packaging
02	20 piece strip
07	7" Reel
13	13" Reel

Color Field				Operating Characteristics			
Color Code	Color	Material	Feature	Test Condition	Vf Typ (Volts)	Typ Luminous Intensity (mcd)	Typ Dom Wavelength (nm)
20*	Red	GaAsP/GaP	Hi. Efficiency	If = 10mA	2.0	5.0	628
21	Red	AlGaAs	----	If = 10mA	1.8	23.9	645
22	Green	AlGaP	Hi. Intensity	If = 10mA	2.1	9.1	570
23*	Green	GaP	----	If = 10mA	2.0	4.0	570
24*	Yellow	GaAsP/GaP	----	If = 10mA	2.0	5.0	587
25*	Orange	GaAsP	----	If = 10mA	2.0	13.7	606
26	Blue	InGaN	----	If = 20mA	3.5	6.0	465
27	Yellow	AlInGaP	----	If = 10mA	2.0	33.6	587
28	White	InGaN	----	If = 20mA	3.5	19.0	x .33 y .33
30	R/G	GaAsP	----	If = 10mA	2.0/2.0	6.5/8.0	628/570
31	Y/G	GaAsP/GaP	----	If = 10mA	2.0/2.0	6.5/8.0	586/570
32	R/Y	AlGaP/AlGaP	----	If = 10mA	2.0/2.0	6.5/6.5	528/586
34	R/B	AlInGaP/GaN	----	If = 20mA	1.9/3.9	30/5	626/470
35	R/G/B	AlInGaP/InGaN	----	If = 20mA	2.6/4.5/2.6	10/5/16	645/466/570
36	O/G	GaAsP/GaP	----	If = 10mA	2.0/2.0	5.5/8.5	606/570

Low current version only available in marked colors (). See page 14 for details.